

# Week for the women health – medical package

7 nights / 8 days

**HIGH SEASON (01.04.-31.10., 25.12.-15.01.)**

ROOM CATEGORY	BREAKFAST		HALF BOARD		FULL BOARD	
	DOUBLE	SINGLE	DOUBLE	SINGLE	DOUBLE	SINGLE
	2 PAX	1 PAX	2 PAX	1 PAX	2 PAX	1 PAX
PRESIDENTIAL SUITE	10 575	8 928	11 065	9 173	11 345	9 313
SAVOY SUITE	9 875	8 228	10 365	8 473	10 645	8 613
SUITE	9 175	7 528	9 665	7 773	9 945	7 913
APARTMENT	8 195	6 548	8 685	6 793	8 965	6 933
JUNIOR SUITE	8 195	6 548	8 685	6 793	8 965	6 933
DELUXE	6 375	3 993	6 865	4 238	7 145	4 378
SUPERIOR	5 745	3 573	6 235	3 818	6 515	3 958
COMFORT	5 465	3 363	5 955	3 608	6 235	3 748
STANDARD	5 115	3 153	5 605	3 398	5 885	3 538
COMPACT	4 835	2 943	5 325	3 188	5 605	3 328

**LOW SEASON (01.11.-24.12., 16.01.-31.03.)**

ROOM CATEGORY	BREAKFAST		HALF BOARD		FULL BOARD	
	DOUBLE	SINGLE	DOUBLE	SINGLE	DOUBLE	SINGLE
	2 PAX	1 PAX	2 PAX	1 PAX	2 PAX	1 PAX
PRESIDENTIAL SUITE	9 035	7 423	9 525	7 668	9 805	7 808
SAVOY SUITE	8 335	6 723	8 825	6 968	9 105	7 108
SUITE	7 635	6 023	8 125	6 268	8 405	6 408
APARTMENT	6 655	5 043	7 145	5 288	7 425	5 428
JUNIOR SUITE	6 655	5 043	7 145	5 288	7 425	5 428
DELUXE	5 325	3 153	5 815	3 398	6 095	3 538
SUPERIOR	4 835	2 803	5 325	3 048	5 605	3 188
COMFORT	4 625	2 663	5 115	2 908	5 395	3 048
STANDARD	4 345	2 523	4 835	2 768	5 115	2 908
COMPACT	4 135	2 383	4 625	2 628	4 905	2 768

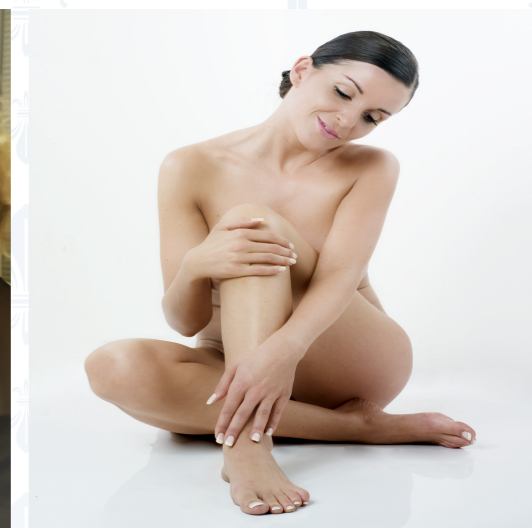
## Program includes:

- ❖ 7× Luxury accommodation
- ❖ 7× Buffé breakfast + boarding as ordered
- ❖ 7× Complex spa treatment:
  - 3× spa procedures per day.
  - 3× medical examinations (initial, check-up and final),
  - 1× basic laboratory blood test
- ❖ 1× Vitamin D
- ❖ 1× Biochemical testing of the thyroid - TSH, FT3, FT4
- ❖ 1× Glycosylated hemoglobin
- ❖ 1× Female hormone testing
- ❖ 1× Parathormone
- ❖ 1× ECG
- ❖ 1× Densitometry
- ❖ 4× MagnetoStym-therapy of urinary incontinence, weakness of the muscles of the pelvis
- ❖ 2× Peat vaginal swab
- ❖ 1× Cytological screening for oncology prevention
- ❖ 1× Liquid Based Cytology + HPV viruses
- ❖ 1× Body monitoring
- ❖ 1× Nutritionist Consultation

\*The attending physician reserves the right to formulate a treatment program depending on the patient's health state.

## Complimentary:

25m Swimming pool, Sauna, Steam bath, Whirlpool, Kneipp's footbath, Contrast bath, Fitness centre



The prices are per room for a 7-nights stay in EUR including VAT and all taxes except of the resort tax in the amount of 15 CZK per person per day. Payment of the resort tax is obligatory for all by individuals age 18 to 70 years old incl. Persons under the age of 18 and over the age 70 are exempt. The resort tax is paid upon arrival at the hotel.

The minimal length of stay is 7 nights. The recommended length of stay is 21 nights. Price changes are reserved.