

English version
2019 / 2020



SAVOY WESTEND HOTEL



LUXURY SPA RESORT
KARLOVY VARY

RESORT DIRECTORY



CONTENTS

Welcome	Wellness & Leisure
Resort	Restaurants
Villas	Bars
Apartments & Suites	Conference rooms
Rooms	Royal Club
Medical Spa Centre	Services
Local Natural Healing Resources	Where to find us
Provable Effects of Spa Treatment	

All links are active. Please, click on the selected button to move to required section.



*Luxury service
on highest
niveau is timeless*

*We serve you
since 1897*

If you want your spa stay to be an unrepeatable and a unique experience, accept our invitation to the exclusive and fabulously charming spa resort, the Savoy Westend Hotel, located in the most attractive historic part of Karlovy Vary. Allow yourself to be carried away by the atmosphere of a bygone era that will surround you at every step you make. Thanks to careful reconstruction of the original historical buildings and preservation of the unique architectonic elements, in combination with sensible integration of the latest equipment, our spa resort meets the requirements of even the most demanding clientele.



Resort

„Harmony of history and modern luxury”

The spa and hotel resort Savoy Westend Hotel is situated in an elite historical part of Karlovy Vary. It connects unique history dated to 1897 with current international hotel standards at a five-star level. Unique original architecture and natural beauty of surrounding forests are combined in harmony with traditional and modern balneology.

- ❖ Spa resort with the total area 7.000 m²
- ❖ It consists of five Art Nouveau villa houses: Savoy
Artemis
Kleopatra
Carlton
Rusalka
- ❖ All villas are directly linked to the balneal centre
- ❖ 3.000 m² modern Medical Spa Centre
- ❖ 1.200m² summer resting garden
- ❖ 2 air-conditioned restaurants
- ❖ 1 air-conditioned bar
- ❖ Conference rooms
- ❖ Guarded parking and underground garage with a total capacity of 56 parking spaces



Villas

„Delivering Spa & Luxury since 1897”

VILLA SAVOY

This stately building is a dominant of the whole resort and its elegance and unique architectonic composition has been attracting hotel guests since 1897. There is a total of 34 rooms available in the 4-storey Savoy villa, including the most prestigious and luxurious ones – the Presidential Suite and the Savoy Suite. On the ground floor of the building there are two hotel restaurants and bar. The Savoy villa is interconnected with the Medical Spa Centre through an underground corridor.

VILLA ARTEMIS

The villa Artemis was built in 1875. It is situated in the middle of a raised garden terrace in the heart of the whole resort. Like all other buildings, the Artemis villa is interconnected to the Medical Spa Centre. The Artemis villa offers only 6 rooms. The more it emphasizes the ultimate privacy the villa provides to its guests. The villa rooms - majority of them being spacious apartments with their own kitchenettes – come with their own private parking places.

VILLA CARLTON

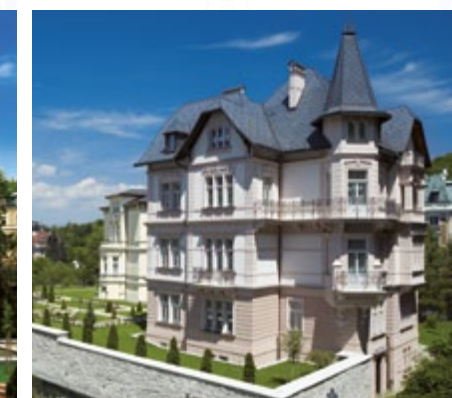
The Carlton villa also dates back to the year 1897 and it is situated in a small courtyard at the end of a palm tree alley. The villa offers 24 rooms. The whole 2nd and 3rd floors of the building consist of rooms that are classified as Suite and Junior Suite and that can also be used as an Executive Floor. The Carlton villa is also directly connected to the Medical Spa Centre, thus providing all possible luxury and comfort even to the most demanding clientele.

VILLA KLEOPATRA

Like Carlton, the five-storey building of the villa Kleopatra dates back to the year 1897 and is situated at the end of a palm tree alley. On the right-hand side it neighbours on the Savoy villa with which it is interconnected through a glazed corridor. There is the total of 31 rooms in the Kleopatra villa. Most of them are west-oriented and afford a beautiful view of the Orthodox church.

VILLA RUSALKA

The Rusalka villa was built in 1897 at the end of the garden terrace. All of its four floors on which rooms are situated project above the level of the terrace. The villa offers 18 rooms and is closely connected to the Medical Spa Centre with which it is interconnected by an elevator.



Apartments & Suites

„Like a dream from a fairy tale”

- ❖ 14 luxury Suites and Apartments
- ❖ 1× Presidential Suite in villa Savoy
Presidential Suite Connected in villa Savoy
- ❖ 1× Savoy Suite in villa Savoy
Savoy Suite Connected in villa Savoy
- ❖ 3× Suite in villa Carlton
Suite Connected in villa Carlton
- ❖ 4× Apartment in villa Artemis
- ❖ 5× Junior Suite in villa Carlton
- ❖ 2× Executive floor in villa Carlton

- ❖ Welcome fruit plate
- ❖ Welcome flower decorations
- ❖ Bottle of sparkling wine on arrival day
- ❖ Hot drink set (tea, coffee, cocoa)
- ❖ Cosmetics Chopard
- ❖ Small gift on arrival



Rooms

„Glamorous luxury of a long tradition”

- ❖ 99 luxuriously equipped rooms
- ❖ 23× Deluxe in villa Savoy
 - 8× Deluxe in villa Kleopatra and Carlton
 - 2× Deluxe Connected in villa Savoy
 - 1× Deluxe Connected in villa Kleopatra
- ❖ 33× Superior in villa Savoy, Artemis, Carlton and Kleopatra
 - 1× Superior Connected in villa Kleopatra
- ❖ 8× Comfort in villa Kleopatra
- ❖ 14× Standard in villa Carlton, Kleopatra and Rusalka
- ❖ 13× Compact in villa Carlton, Kleopatra and Rusalka

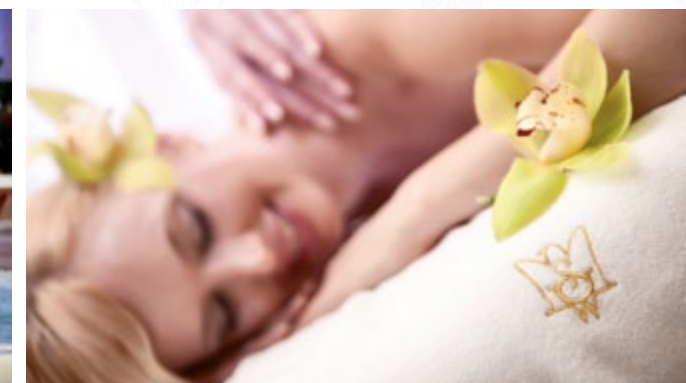


Medical Spa Centre



„An oasis of tranquillity and a source of new energy”

- ❖ 3.000 m² two-floor balneal centre
- ❖ 1.200 m² summer resting garden
- ❖ Selection of over 300 spa, relaxing, wellness and cosmetic treatments
- ❖ Therapeutic and relaxation centre utilizing natural healing resources – mineral waters, peat
- ❖ Modern medical equipment – lasertherapy, electrotherapy, magnetotherapy
- ❖ Thermal water for healing baths
- ❖ Complete and Relax spa treatment
- ❖ Medical care
- ❖ Wellness programmes
- ❖ Relaxation zone
- ❖ 25 m indoor swimming pool with massage waterfalls
- ❖ Sauna
- ❖ Steam bath
- ❖ Whirlpool
- ❖ Fitness centre
- ❖ Cryosauna
- ❖ Cosmetic and laser centre Asklepion utilizing Dior® and Orlane® cosmetics
- ❖ Barrier-free access in the whole balneal centre
- ❖ Sale of gift items



Medical Spa Centre

“Enjoy the healing touch of Karlovy Vary's nature”

❖ THERMAL MINERAL SPRINGS

Karlovy Vary and Western Bohemia, in general, abound with rare medicinal mineral springs which are rich in minerals and other efficient trace elements. Mineral water abstracted in the Karlovy Vary region is exceptional thanks to its chemical compositions and physical properties. The oldest components of this water are more than 25 000 years old. Gaseous carbon dioxide is a product of post-volcanic activities in the local region. Mineral water also contains a large amount of main, secondary and trace elements. While the basic chemical composition of all springs, whose temperature reaches up to 73.4°C, is nearly identical, every spring has a specific temperature, content of dissolved carbon dioxide, radioactivity and concentration of secondary and trace elements. In scientific terms, local mineral waters are characterized as thermal, hypotonic and strongly mineralized. The medicinal effect of these waters is attributed mainly to the high content of pharmacodynamically effective substances. Today, spa procedures; i.e. drinking cures and other internal or external balneological therapies use 14 springs that are recognized as natural healing resources and that rise from 21 spring vases.

❖ CARBON DIOXIDE

Carbon dioxide was used for healing already in Ancient Rome. Thanks to its low reactivity carbon dioxide is nearly inert and highly soluble in water. It has antibacterial and fungistatic effects and thus it reduces the effects of bacteria and fungal molds. A carbon bath is one of the oldest spa procedures. It is applied in two ways: either as a traditional bath enriched with carbon dioxide, or as a so-called dry carbon bath. Even though their effects are almost identical, some clients find the 'dry' bath more appealing. The absorption of carbon dioxide makes blood vessels dilate and thus leads to better blood supply to tissues. Subsequently, the amount of oxygen in blood is increased and skin, muscles and body organs including the brain are better supplied with oxygenated blood. As a result, the immune system is energized

and self-healing properties of the body are enhanced. Another positive effect of this procedure is reduction of blood pressure and pulse frequency. This is why carbon baths belong to our main procedures used to treat ischemic and cardiovascular diseases and to provide additional treatment to patients who suffered a heart attack.

❖ PELOIDS – PEAT & THERAPEUTIC MUD

Peloids - peats or muds – are real gifts of Mother Nature. Depending on the site of occurrence, peloids feature different properties. However, their therapeutic effects are similar. The great advantage of all peloids is their ability to keep a stable temperature for a relatively long time. This is why they are used for procedures during which a stable temperature is required. The beneficial effects of peat for the human body have been known for centuries. Peat wraps and baths have excellent healing effects which have been proved by many generations. Peat consists of hundreds of dead plants and contains a large number of nutrients, minerals, natural trace elements and other substances. Peat is easily absorbed by skin. It helps skin regenerate, supplies it with nutrients, and improves its blood circulation. Peat has wonderful antibacterial and detox properties. Besides therapeutic effects, peat has also great cosmetic qualities. Mud can be applied locally or as whole-body wraps. They help to reduce muscular tension, improve the nourishment of cartilage, connective tissues and intervertebral discs. Mud wraps are also beneficial during chronic inflammations, arthritis or vertebrogenic syndromes. They also positively affect the immune system, slows down the loss of elastin, collagen and hyaluronic acid. Highly convenient is the mixture of peloid and paraffin, which produces so-called parafango.

Provable effects of our spa treatment

*“Results of unique combination of the modern spa industry
and traditional balneology”*

If a doctor-prescribed therapeutic regimen, including an individual dietary plan, is strictly observed for at least 3 weeks, the following effects of our treatment are obviously proved.

❖ Reduction of total cholesterol by up to 30%

Marked reduction of cholesterol levels in overweight individuals and in people whose initial cholesterol levels were too high. Strict observance of medical principles and recommendations after arriving home helps to maintain the positive effects of reduced cholesterol for as long as one year.

❖ Average reduction of blood uric acid by 25%

This reduction of blood uric acid alleviates gout symptoms and promotes general well-being.

❖ Reduction of insulin resistance in 85% clients with metabolic syndrome

This reduction promotes better management of diabetes, mainly of type 2, especially in clients with the elevated secretion of their own yet less effective insulin.

❖ Significant improvement of fatty-liver disease in 90% clients

As early as 2 weeks after starting an intensive drinking cure based on the mineral waters of Karlovy Vary 90% of clients experience a significant improvement of steatosis, or fatty-liver disease. The respective parameters are measured during FIBROSCAN examination which facilitates unparalleled treatment of this condition.

❖ Better joint mobility

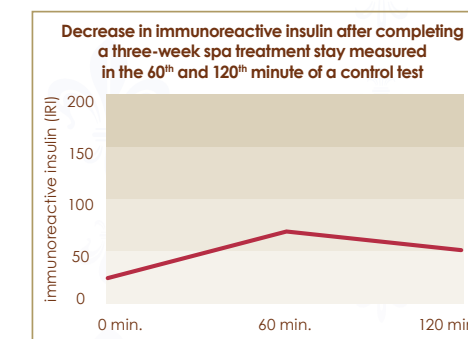
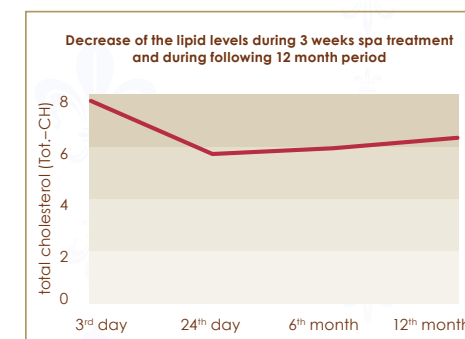
After two weeks of the intensive application of complex physical therapy joints become more mobile and the symptoms of the degenerative disorders of the locomotor system are alleviated.

❖ Subjective improvement is reported by 90% clients with digestive tract diseases

90% clients with functional dyspeptic conditions of the upper and lower gastrointestinal tract (heartburn, bloating, flatulence, diarrhea, constipation) experience improvement as early as 2 weeks after starting a complex spa treatment.

❖ Up to 5% weight loss in seriously overweight clients

Seriously overweight clients report 5% weight loss after 4 weeks of a complex spa treatment. If the regimen is observed after arriving home, weight tends to decrease even more.



Wellness & Leisure

„A unique combination of active rest and relaxation“

- ❖ Modern wellness centre – 25 m indoor swimming pool with massaging waterfalls, sauna, steam bath, whirlpool, solarium
- ❖ Fitness room
- ❖ Wellness Packages
- ❖ Wellness & Beauty Centre
- ❖ Cosmetic & Laser Centre
- ❖ Oriental Thai Centre
- ❖ Other sport activities – mountain biking, nordic walking, horse riding, tennis, skiing etc.



Restaurants

„A feast for your senses”

SAVOY RESTAURANT:

- ❖ 264 m²
- ❖ Capacity for 150 persons
- ❖ All-day restaurant with a unique view
- ❖ Wide offer of breakfasts, lunches and dinners in the form of buffé
- ❖ Special offer of healthy diet cuisine
- ❖ Open daily from 7.00 a.m. to 9.00 p.m.

SAVOY ROYAL RESTAURANT:

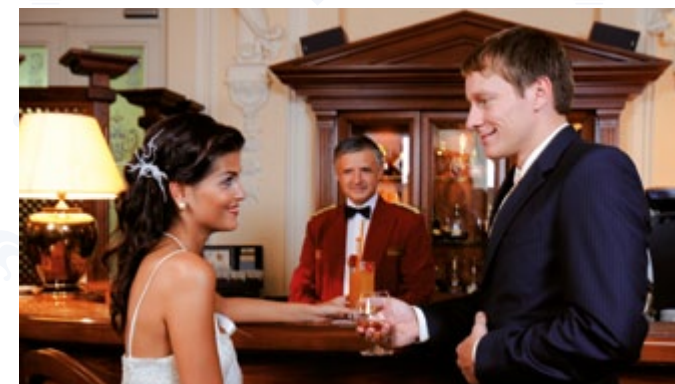
- ❖ 88 m²
- ❖ 3 separable lounges with the total capacity of 48 persons
- ❖ Luxury rooms with fancy stucco and crystal chandeliers
- ❖ Elegant equipped interior
- ❖ Wide choice of international cuisine delicacies
- ❖ Wide selection of wines from all over the World
- ❖ Ideal place for festive occasions
- ❖ Open daily from 12.00 a.m. till 3.00 p.m. & from 6.00 p.m. till 10.00 p.m.



Bars

KING'S CLUB:

- ❖ 95 m²
- ❖ Capacity for 36 persons
- ❖ Lobby – Café – Bar
- ❖ Wide choice of alcoholic and non-alcoholic drinks
- ❖ Wide selection of cigars and tobacco products
- ❖ Offer of cold and hot meals
- ❖ Live piano music every evening
- ❖ Wi-Fi internet connection /free of charge/
- ❖ Open daily from 11.00 a.m. till 11.00 p.m.



Conference rooms

„An ideal place for you to make successful business deals“

SAVOY CONFERENCE ROOM:

- ❖ 98 m²
- ❖ Conference room with the maximum capacity of 78 persons
- ❖ Modern conference equipment
- ❖ Wi-Fi, LAN Internet connection
- ❖ Room disposes of daylight with a possibility of blackout
- ❖ Terrace for smokers
- ❖ Turnkey workshops

SAVOY ROYAL LOUNGES:

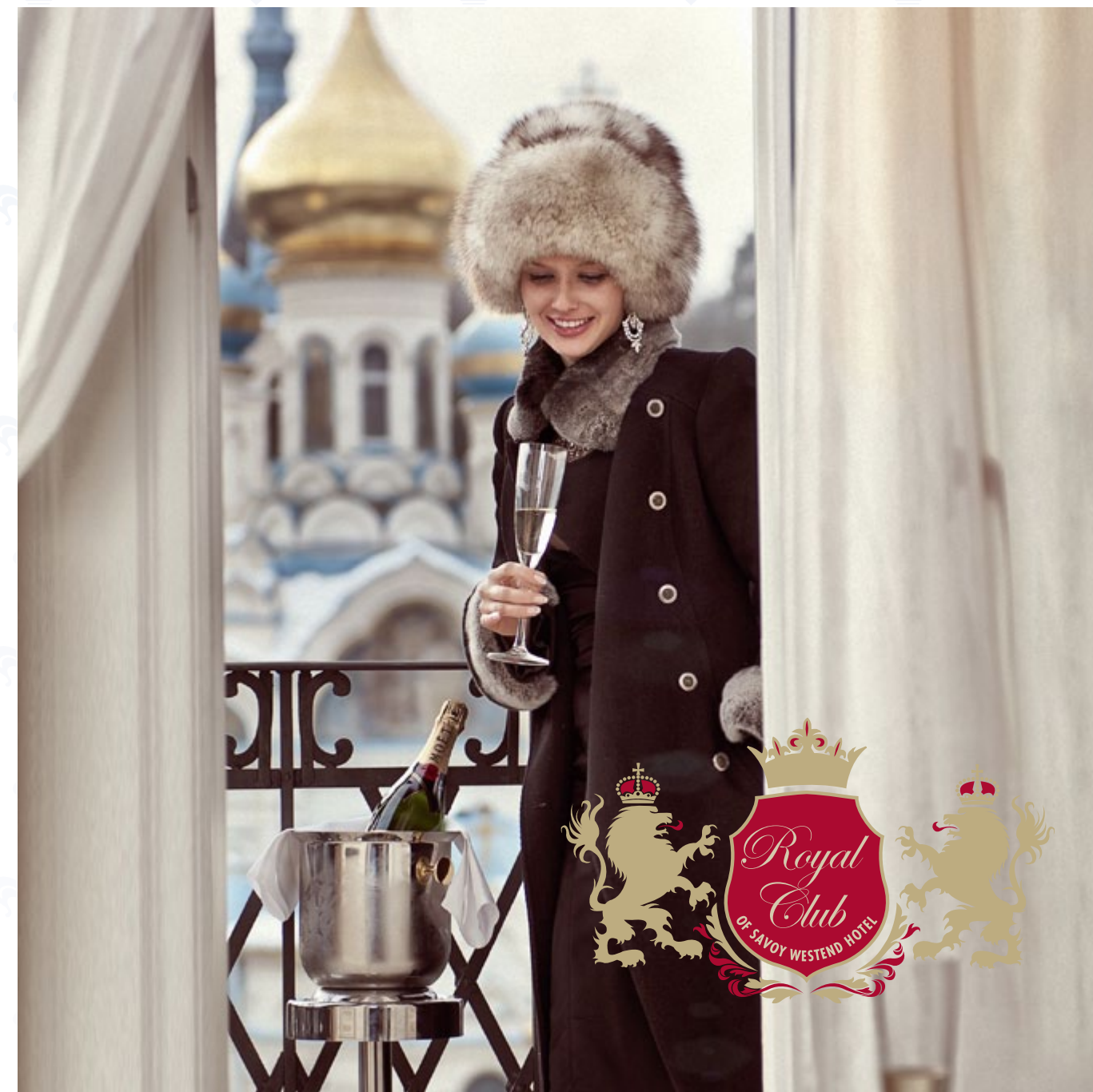
- ❖ 35 m² / 28 m² / 25 m²
- ❖ 3 individually separable conference lounges with the total maximum capacity of 66 persons
- ❖ Luxury rooms with fancy stucco and crystal chandeliers
- ❖ Modern conference equipment
- ❖ Wi-Fi, LAN Internet connection
- ❖ All rooms dispose of daylight with a possibility of blackout
- ❖ Turnkey workshops
- ❖ Closed saloons for minor conferences



Royal Club of Savoy Westend Hotel

*„Join the Royal Club loyalty program
and enjoy its advantages and discounts”*

- ❖ Bronze membership
- ❖ Silver membership
- ❖ Gold membership
- ❖ Platinum membership
- ❖ Diamond membership
- ❖ Royal Club discounts for direct bookings
- ❖ Royal Club discounts for additional services
- ❖ Royal Club membership gifts
- ❖ Royal Club complimentary services
- ❖ Royal Club on-line reservation discounts exclusively on www.savoywestend.cz



Services

„In a way satisfactory to you”

- ❖ Room service 24 hours a day
- ❖ Security service 24 hours a day
- ❖ Medical nurse service 24 hours a day
- ❖ Medical emergency 24 hours a day
- ❖ Doctor service 12 hours a day
- ❖ Physicians specialized in balneology
- ❖ Complex body screening
- ❖ In-house diagnostic centre
- ❖ Laboratory
- ❖ Diet nurse service
- ❖ Healthy diet
- ❖ Transfers to the spa springs
- ❖ Spa springs delivery service
- ❖ Royal Club loyalty programme for repetitive guests
- ❖ Concierge services
- ❖ Baby sitting service
- ❖ Entertainment & services for children
- ❖ Daily news service
- ❖ Library / DVD library
- ❖ Clothes washing
- ❖ Cleaning services
- ❖ Shoes cleaning service
- ❖ Umbrella service
- ❖ Mountain bike, ski, nordic walking poles rental service
- ❖ Fitness trainer
- ❖ Private transfers
- ❖ Car rental
- ❖ Limousines service
- ❖ Tailor-made excursions & trips
- ❖ Tailor-made weddings & events



Where to find us

Flights Connection

- ❖ International Airport Praha – Ruzyně 120 km
- ❖ International Airport Karlovy Vary 12 km
- ❖ Regular charters from Moscow, St. Petersburg and Praha

Train Connection

- ❖ Main Train Station Karlovy Vary 4 km
- ❖ Transport terminal – Lower Train Station 2 km

Bus Connection

- ❖ Transport Terminal – Lower Train Station 2 km

Car Connection

- ❖ GPS navigation 50°13'28.531"N
12°52'35.65"E

The entrance to the spa resort is possible only upon a permit issued by Town Police Karlovy Vary. The guests of Savoy Westend Hotel are permitted in upon the Hotel reservation. Should you be checked, please take the confirmation of your Savoy Westend Hotel reservation with you.

HOW FAR IS IT

- ❖ Snake Spring – Sadová Colonnade 0,2 km
- ❖ Mineral Springs – Vřídelní Colonnade 0,5 km
- ❖ Orthodox Church of St. Peter and Paul 0,1 km
- ❖ St. Maria Magdalena Church 0,6 km
- ❖ Town Theater 0,7 km





VILLA SAVOY

&



VILLA ARTEMIS

&



VILLA CARLTON

&



VILLA KLEOPATRA

&



VILLA RUSALKA

Savoy Westend Hotel, Petra Velikého 16, 360 01 Karlovy Vary, Czech Republic,
tel.: +420 359 018 888, +420 359 018 898
e-mail: reservation@savoywestend.cz, reservation2@savoywestend.cz
www.savoywestend.cz

Global Distribution System:

Amadeus	UI KLSWH
Sabre	UI 6469
Apollo	UI 76033
Worldspan	UI 43921